



13

14

15



WHEN TIME IS OF THE ESSENCE, ONYX FIRSTVISION™ POINTS THE WAY.

In an emergency, the only thing more important than speed is reliable information. With ONYX FirstVision, a first responder or incident commander goes directly to the system's interactive touch screen to quickly assess critical information, such as the origin of a fire, how fast and in which direction it is spreading, and the access or exit routes that are affected. Armed with this knowledge, firefighters and other emergency personnel can quickly develop and execute a safer, more effective response that can potentially reduce the loss of property and life.



NOTIFIER WORLD HEADQUARTERS

12 Clintonville Road
Northford, CT 06472
United States of America
Tel: 203-484-7161
Fax: 203-484-7118
www.notifier.com

For information on regional office locations throughout the world, please visit www.notifier.com.



Fire Alarm
Control Panels



Emergency
Communications
Systems



Fire Alarm
Networks



Advanced Fire &
Smoke Detection



Fire, Security,
CCTV Integration



Gas Detection

For over 60 years, NOTIFIER has been a leader in the fire alarm industry. Today, we are the largest manufacturer of engineered fire alarm systems with over 400 distributors worldwide, and regional support operations on every continent for the flexibility and options your business needs.

NOTIFIER - Leaders in Life. Safety. Technology.





 **ONYX
FIRSTVISION™**

 **NOTIFIER®**
by Honeywell



Through its intuitive, interactive display, ONYX FirstVision can quickly and accurately answer the most important questions for firefighters and emergency personnel.

- Which smoke/heat devices are in alarm?
- Where in the structure did the fire start?
- When did the fire start?
- How long have devices been alarming?
- In which direction is the fire progressing?
- What physical hazards exist?

Building 2, 11917 Plantside Dr, Louisville, 40299

1:18:11 PM

Event List

	Time	Floor	Location	Device Type
1	1:18:36 PM	New Floor	Room 1114	Smoke Detector
2	1:18:01 PM	New Floor	Room EE9	Duct Smoke Detector
3	1:18:02 PM	New Floor	Room EE9	Pull Station
4	1:18:03 PM	New Floor	West side in Hallway	Duct Smoke Detector
5	1:18:04 PM	New Floor	Hallway Monitor Module	Monitor Module
6	1:18:05 PM	New Floor	Room EE6	Pull Station
7	1:18:06 PM	New Floor	East Hallway	Duct Smoke Detector
8	1:18:09 PM	New Floor	Room FP9	Sprinkler
9	1:18:10 PM	New Floor	2nd floor East Side Hallway	Duct Smoke Detector
10	1:18:10 PM	New Floor	2nd Floor Hallway	Monitor Module
11	1:18:11 PM	New Floor	East side pullstation	Pull Station
12	1:18:16 PM	New Floor	East side near stairway	Heat Detector

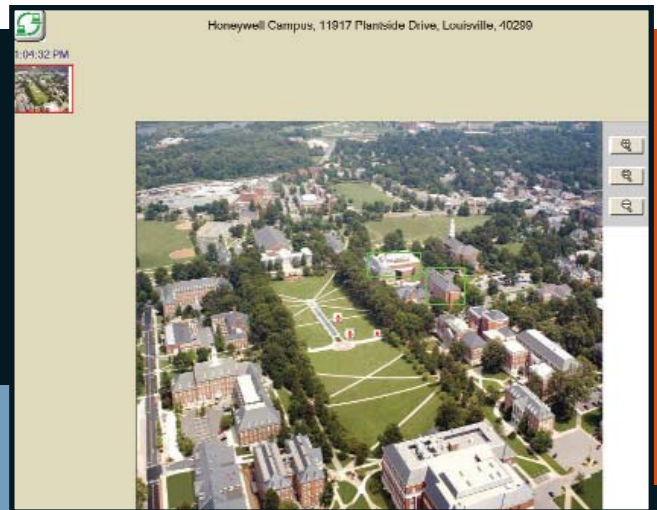
Close

FIRSTVISION ANSWERS FIREFIGHTERS' MOST IMPORTANT QUESTIONS

SEE WHEN. SEE WHERE. SEE MORE. GET THE WHOLE PICTURE, QUICKLY AND ACCURATELY

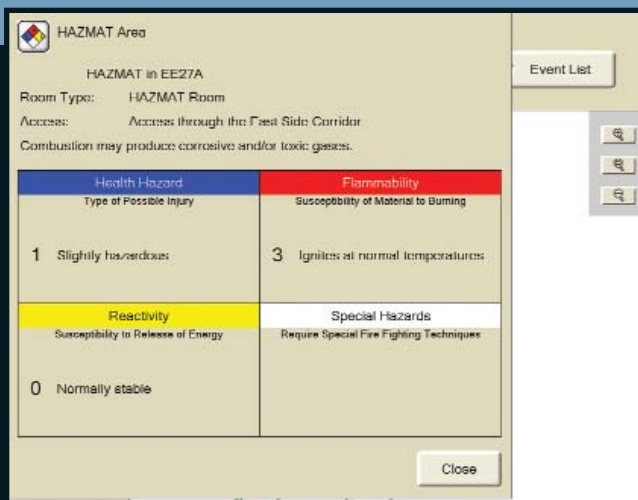


Current annunciators only display information from the fire alarm control panel, usually no more than which devices are in alarm. On its 17" LCD, wall-mounted touch screen, ONYX FirstVision displays entire floor plans with the location of all active alarm system devices, potential hazards, additional access and egress routes, as well as standpipe, stairway and emergency shutoff locations throughout the building. Anything that might help or hinder an emergency responder is clearly indicated.



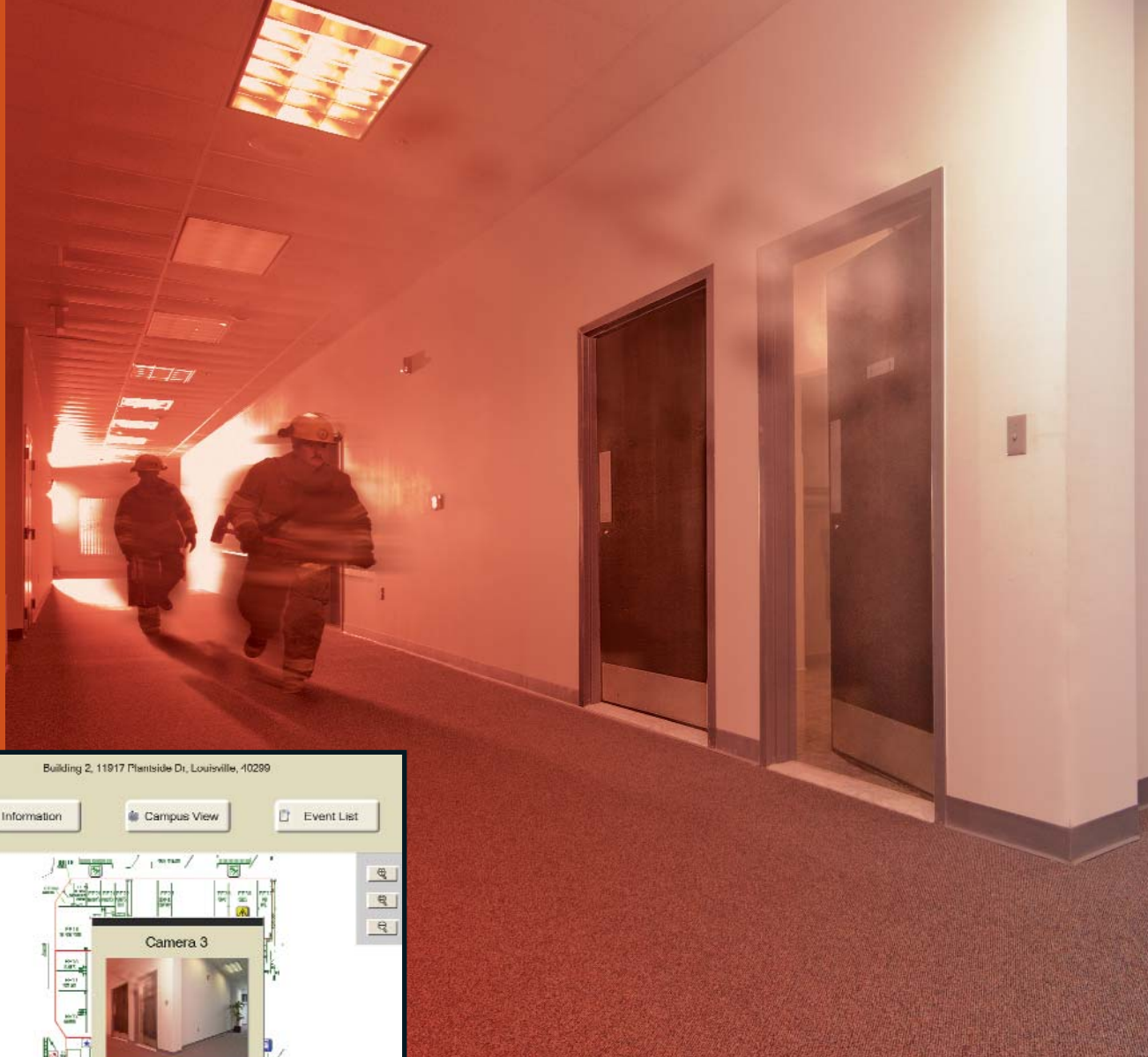
SURVEY AN ENTIRE CAMPUS OR PINPOINT A SINGLE DETECTOR

Using ONYX FirstVision, emergency responders quickly identify any and all areas of concern within an individual building or multiple buildings throughout a vast campus. With an entire campus in their view, incident commanders can direct arriving personnel and apparatus to strategic positions around the emergency. Then, with just a few touches of the screen, they can narrow their focus down to an individual building, floor, or room—even a single, activated smoke detector.



KNOW WHAT'S AROUND THE NEXT CORNER

With ONYX FirstVision, firefighters and other emergency responders are better able to identify potentially dangerous situations or areas that contain hazards before they enter that part of the structure. This knowledge can help them do their jobs faster and more safely.



LIVE VIDEO FEEDS GIVE A CLEARER PICTURE

FirstVision can integrate live CCTV video feeds into its interactive display, giving incident commanders a clearer, more detailed picture of the emergency. By simply touching one of the camera icons on the screen, responding firefighters can visually verify the presence of building occupants, smoke, or fire. With a clear view and understanding of the situation, the incident commander can coordinate a safer, more effective response.

